

## TP53(R282W)

**Catalog Number:** 21165

**Gene Symbol:** TP53

**Description:** Anti-TP53(R282W) Rabbit Polyclonal Antibody

**Background:** p53 protein acts as a tumor suppressor in many tumor types and induces growth arrest or apoptosis depending on the physiological circumstances and cell type. Defects in TP53 are found in many types of cancers.

**Immunogen:** A synthetic peptide near the C-terminus of human TP53 which includes the mutation of R282W.

**Tested Applications:** ELISA, WB, IHC, IF

**Recommended Dilutions:**

ELISA: 1:1000-1:5000

WB: 1:100-1:1000

IHC: 1:100-1:1000

**Concentration:** 1.0 mg/ml

**Host:** Rabbit

**Clonality:** Polyclonal

**Purity:** Purified from serum

**Format:** Liquid

**Preservative:** No

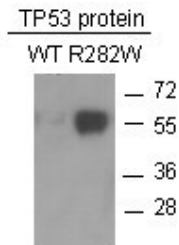
**Constituents:** PBS (without Mg<sup>2+</sup> and Ca<sup>2+</sup>), pH7.4, 150 mM NaCl, 50% glycerol

**Species Reactivity:** Anti-TP53(R282W)

antibody recognizes TP53(R282W) of vertebrates.

**Storage Conditions:** Store at -20°C. Avoid repeated freezing and thawing

Western blot:



WB: Anti-TP53(R282W) pAb

**Western blot analysis of recombinant TP53(R282W) and wild type proteins.**

Purified His-tagged TP53(R282W) protein (Cat. # 10204) and wild type protein (Cat. # 10202) were blotted with anti-TP53(R282W) rabbit antibody (Cat. # 21165).

FOR RESEARCH USE ONLY. NOT FOR DIAGNOSTIC APPLICATIONS